

CLIVIC



2002-2003
Service Manual
Hatchback

INTRODUCTION

How to Use This Manual

This manual is divided into 23 sections. The first page of each section is marked with a black tab that lines up with its corresponding thumb index tab on this page and the back cover. You can quickly find the first page of each section without looking through a full table of contents. The symbols printed at the top corner of each page can also be used as a quick reference system.


Each section includes:

1. A table of contents, or an exploded view index showing:
 - Parts disassembly sequence.
 - Bolt torques and thread sizes.
 - Page references to descriptions in text.
2. Disassembly/assembly procedures and tools.
3. Inspection.
4. Testing/troubleshooting.
5. Repair.
6. Adjustments.

Safety Messages

Your safety, and the safety of others, is very important. To help you make informed decisions, we have provided safety messages, and other safety information throughout this manual. Of course, it is not practical or possible to warn you about all the hazards associated with servicing this vehicle. You must use your own good judgment.

You will find important safety information in a variety of forms including:

- **Safety Labels** – on the vehicle.
- **Safety Messages** – preceded by a safety alert symbol  and one of three signal words, DANGER, WARNING, or CAUTION. These signal words mean:

- DANGER** You WILL be KILLED or SERIOUSLY HURT if you don't follow instructions.
- WARNING** You CAN be KILLED or SERIOUSLY HURT if you don't follow instructions.
- CAUTION** You CAN be HURT if you don't follow instructions.

- **Instructions** – how to service this vehicle correctly and safely.

All information contained in this manual is based on the latest product information available at the time of printing. We reserve the right to make changes at any time without notice. No part of this publication may be reproduced, or stored in a retrieval system, or transmitted, in any form by any means, electronic, mechanical, photocopying, recording, or otherwise, without the prior written permission of the publisher. This includes text, figures, and tables.

As you read this manual, you will find information that is preceded by a **NOTICE** symbol. The purpose of this message is to help prevent damage to your vehicle, other property, or the environment.

First Edition 8/2002 1,168 pages














All Rights Reserved

Specifications apply to U.S.A. and Canada

HONDA MOTOR CO., LTD.

Service Publication Office

As sections with *include SRS components;
special precautions are required when servicing.

General Info	
Specifications	specs
Maintenance	
Engine Electrical	
Engine	
Cooling	
Fuel and Emissions	
*Transaxle	
*Steering	
Suspension	
*Brakes (Including ABS)	
*Body	
*Heating, Ventilation and Air Conditioning	
*Body Electrical	
*Restraints	



General Information

Chassis and Paint Codes	
-2002 Model	1-2
Chassis and Paint Codes	
-2003 Model	1-3
Identification Number Locations	1-4
Warning/Caution Label Locations	1-5
Under-hood Emission	
Control Label	1-7
Lift and Support Points	1-8
Towing	1-9
Parts Marking Locations	1-10

General Information

Chassis and Paint Codes - 2002 Model

Vehicle Identification Number

SHH	EP3	3	5	*	2	U	300001
a	b	c	d	e	f	g	h

a. Manufacturer, Make and Type of Vehicle
 SHH: HONDA OF THE U.K. MFG., LTD. U.K.
 HONDA Passenger vehicle

b. Line, Body and Engine Type
 EP3: CIVIC/K20A3

c. Body Type and Transmission Type
 3: 2-door Hatchback/5-speed Manual

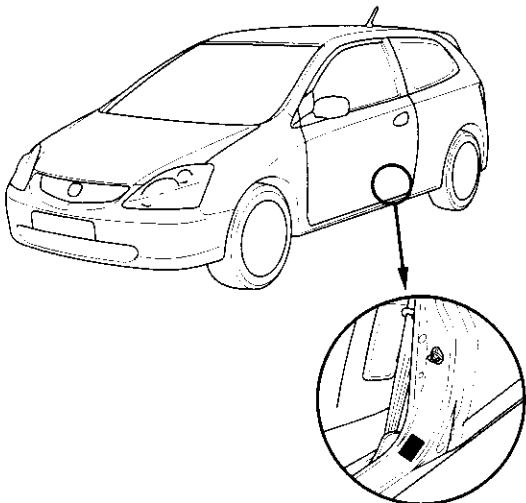
d. Vehicle Grade (Series)
 5: Si (U.S.)
 5: SiR (Canada)
 6: Si with side airbag system (U.S.)
 6: SiR with side airbag system (Canada)

e. Check Digit

f. Model Year
 2: 2002

g. Factory Code
 U: Honda of U.K. Manufacturing in Swindon, England

h. Serial Number
 U.S.: 300001—
 Canada: 600001—



Vehicle Identification Number and Federal Motor Vehicle Safety Standard Certification/Color Label.

Engine Number

K20A3	-	1700001
a		b

a. Engine Type
 K20A3: 2.0 l DOHC VTEC Sequential Multiport Fuel-injected engine

b. Serial Number

Transmission Number

NRH3	-	1000001
a		b

a. Transmission Type
 NRH3: 5-speed Manual

b. Serial Number

Paint Code

Code	Color	U.S.	Canada
B-92P	Nighthawk Black Pearl	○	○
NH-578	Taffeta White	○	○
NH-623M	Satin Silver Metallic	○	○
R-81	Milano Red	○	○
Y-62P	Euro Yellow Pearl	○	○



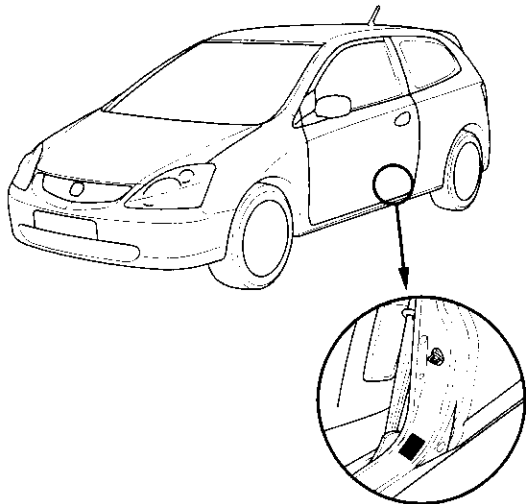
Chassis and Paint Codes - 2003 Model

Vehicle Identification Number

SHH EP3 3 5 * 3 U 400001

a b c d e f g h

- a. Manufacturer, Make and Type of Vehicle**
SHH: HONDA OF THE U.K. MFG., LTD. U.K.
HONDA Passenger vehicle
- b. Line, Body and Engine Type**
EP3: CIVIC/K20A3
- c. Body Type and Transmission Type**
3: 2-door Hatchback/5-speed Manual
- d. Vehicle Grade (Series)**
5: Si (U.S.)
5: SiR (Canada)
6: Si with side airbag system (U.S.)
6: SiR with side airbag system (Canada)
- e. Check Digit**
- f. Model Year**
3: 2003
- g. Factory Code**
U: Honda of U.K. Manufacturing in Swindon, England
- h. Serial Number**
U.S.: 400001—
Canada: 700001—



Vehicle Identification Number and Federal Motor Vehicle Safety Standard Certification/Color Label.

Engine Number

K20A3 - 2700001

a b

- a. Engine Type**
K20A3: 2.0 l DOHC VTEC Sequential Multiport Fuel-injected engine
- b. Serial Number**

Transmission Number

NRH3 - 2000001

a b

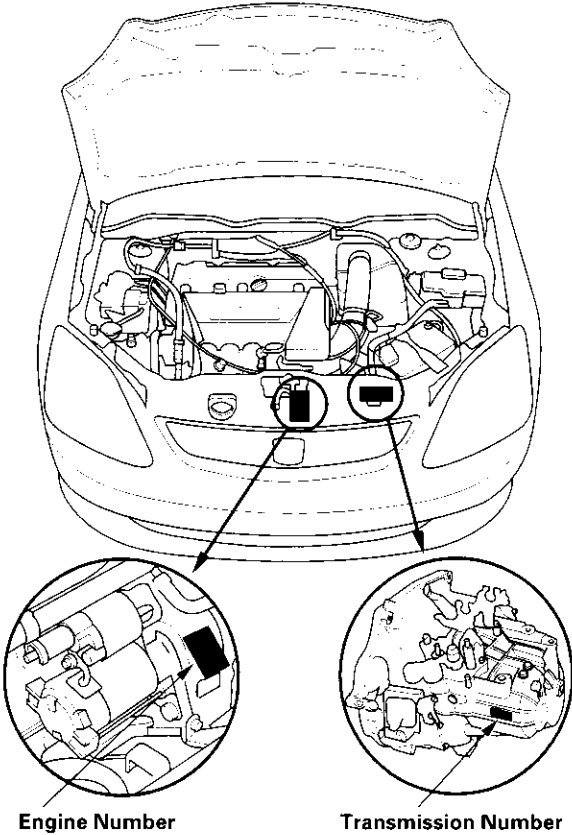
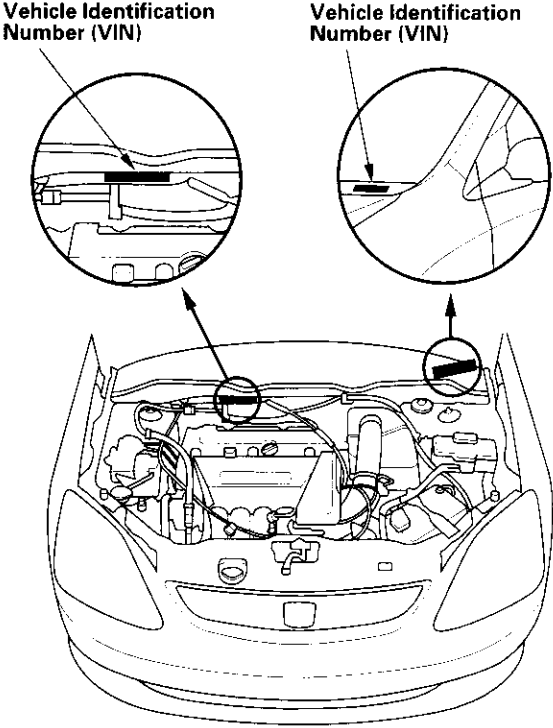
- a. Transmission Type**
NRH3: 5-speed Manual
- b. Serial Number**

Paint Code

Code	Color	U.S.	Canada
B-92P	Nighthawk Black Pearl	○	○
B-520P	Vivid Blue Pearl	○	○
NH-578	Taffeta White	○	○
NH-623M	Satin Silver Metallic	○	○
R-81	Milano Red		○
Y-62P	Euro Yellow Pearl		○

General Information

Identification Number Locations

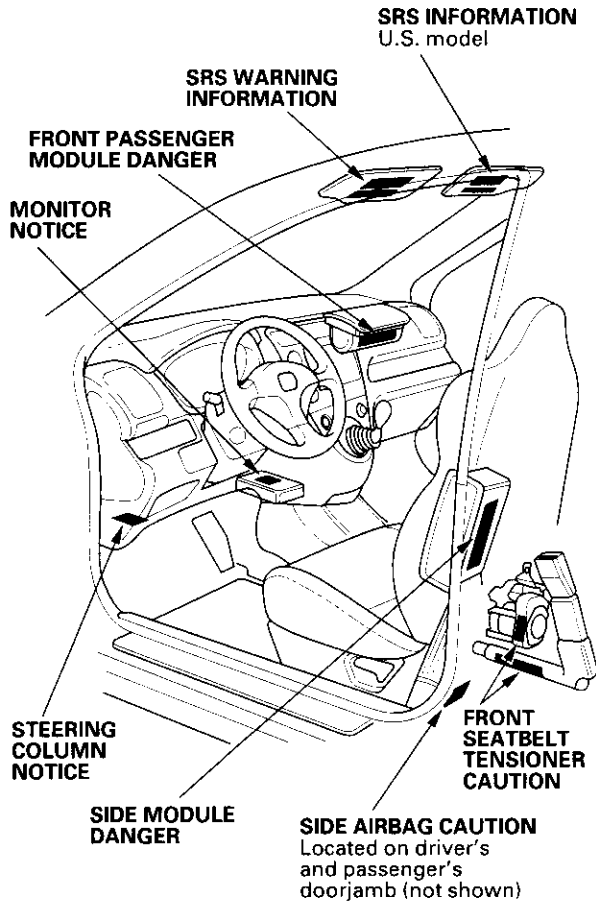




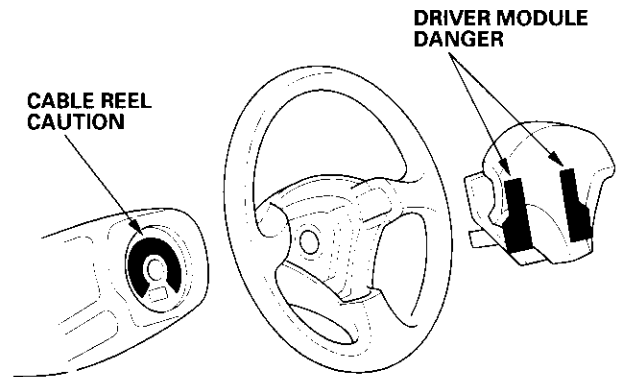
Warning/Caution Label Locations

NOTE: FRONT PASSENGER AIRBAG WARNING TAG (CHILD SEAT) is installed on the glove box on the U.S. model.

Passenger's Compartment:



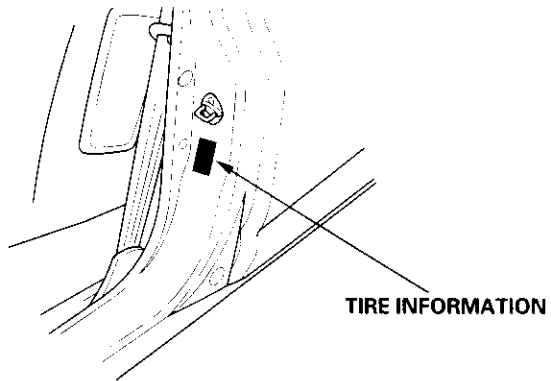
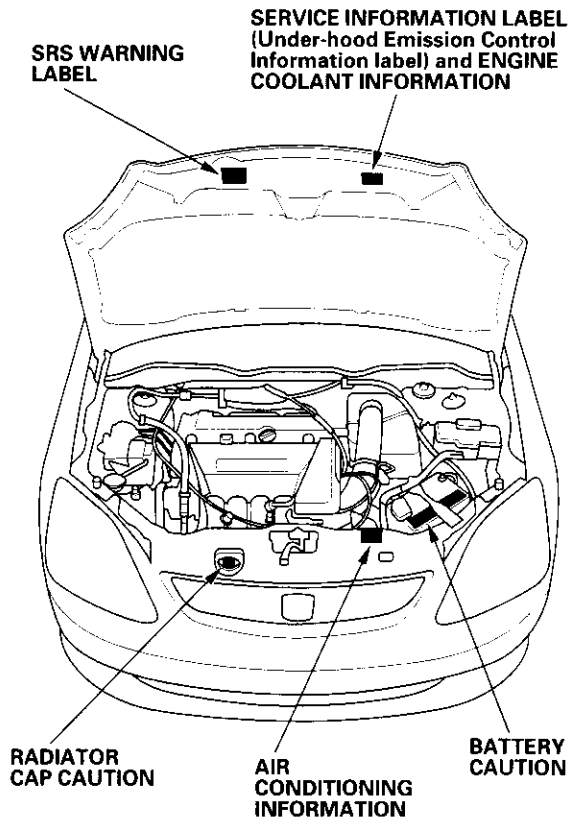
Steering Wheel:



(cont'd)

General Information

Warning/Caution Label Locations (cont'd)

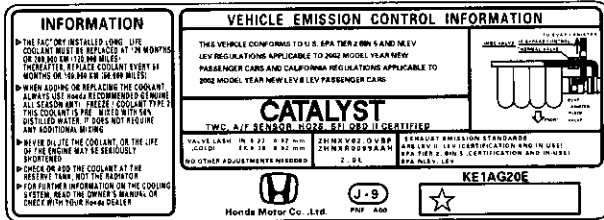




Under-hood Emission Control Label

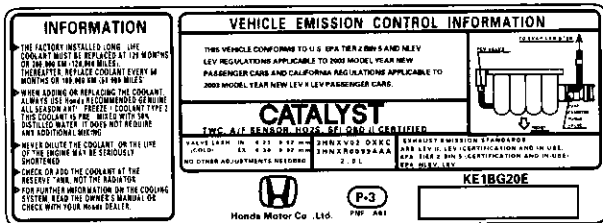
Emission Group Identification

Example: 2002 model



THIS VEHICLE CONFORMS TO U.S. EPA TIER 2 BIN 5 AND NLEV LEV REGULATIONS APPLICABLE TO 2002 MODEL YEAR NEW PASSENGER CARS AND CALIFORNIA REGULATIONS APPLICABLE TO 2002 MODEL YEAR NEW LEV II LEV PASSENGER CARS.

Example: 2003 model



THIS VEHICLE CONFORMS TO U.S. EPA TIER 2 BIN 5 AND NLEV LEV REGULATIONS APPLICABLE TO 2003 MODEL YEAR NEW PASSENGER CARS AND CALIFORNIA REGULATIONS APPLICABLE TO 2003 MODEL YEAR NEW LEV II LEV PASSENGER CARS.

Engine and Evaporative Families:

Engine Family:

2 HNX V 02.0 VBP
a b c d e

- a. Model Year
2: 2002
3: 2003
- b. Manufacturer Subcode
HNX: HONDA
- c. Family Type
V: LDV
- d. Displacement
- e. Sequence Characters
VBP: 2002
XKC: 2003

Evaporative Family:

2 HNX R 0099 AAH
a b c d e

- a. Model Year
2: 2002
3: 2003
- b. Manufacturer Subcode
HNX: HONDA
- c. Family Type
R: EVAP/ORVR
- d. Canister Work Capacity
- e. Sequence Characters
AAH: 2002
AAA: 2003

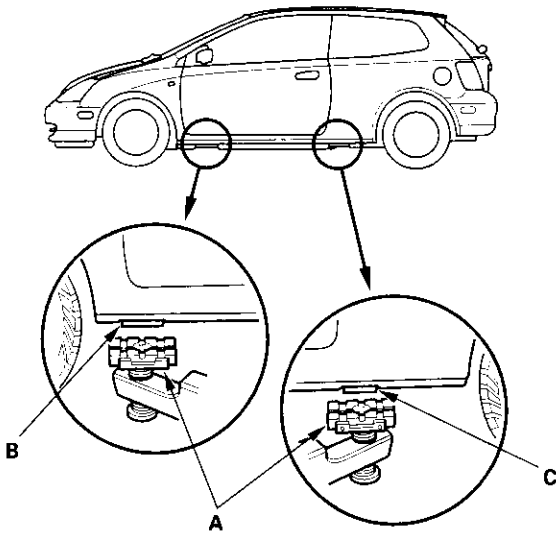
General Information

Lift and Support Points

NOTE: If you are going to remove heavy components such as suspension or the fuel tank from the rear of the vehicle, first support the front of the vehicle with tall safety stands. When substantial weight is removed from the rear of the vehicle, the center of gravity can change and cause the vehicle to tip forward on the hoist.

Frame Hoist

1. Position the hoist lift blocks (A), or safety stands, under the vehicle's front support points (B) and rear support points (C).



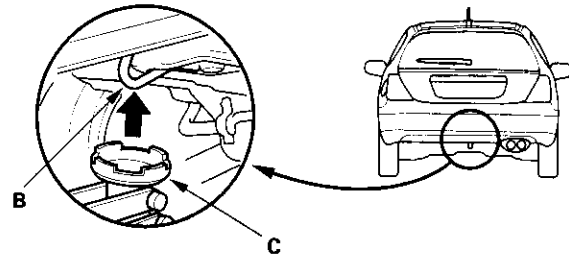
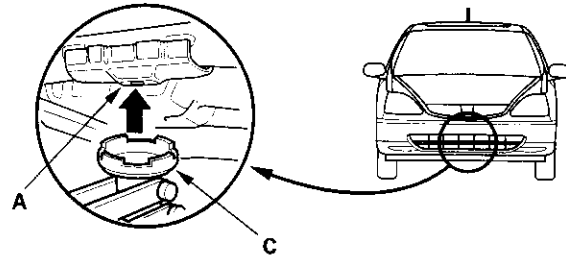
2. Raise the hoist a few inches, and rock the vehicle gently to be sure it is firmly supported.
3. Raise the hoist to full height, and inspect the lift points for solid contact with the lift blocks.

Safety Stands

To support the vehicle on safety stands, use the same support points (B and C) as for a frame hoist. Always use safety stands when working on or under any vehicle that is supported only by a jack.

Floor Jack

1. Set the parking brake.
2. Block the wheels that are not being lifted.
3. When lifting the rear of the vehicle, put the gearshift lever in reverse.
4. Position the floor jack under the front jacking bracket (A) or rear jacking bracket (B), center the jacking bracket in the jack lift platform (C), and jack up the vehicle high enough to fit the safety stands under it.



5. Position the safety stands under the support points and adjust them so the vehicle will level.
6. Lower the vehicle onto the stands.



Towing

If the vehicle needs to be towed, call a professional towing service. Never tow the vehicle behind another vehicle with just a rope or chain. It is very dangerous.

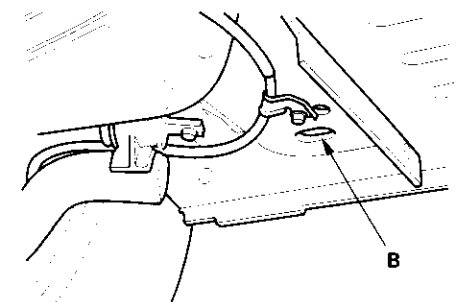
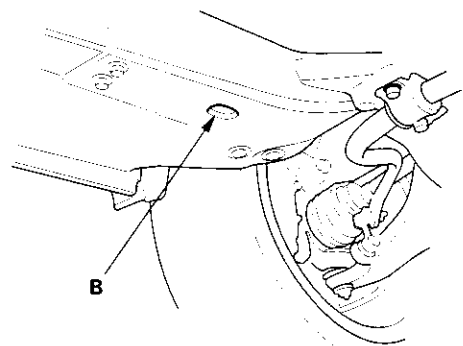
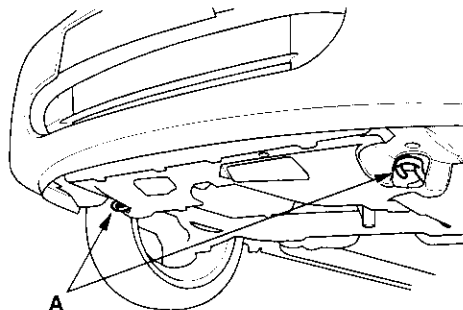
Emergency Towing

There are three popular methods of towing a vehicle.

Flat-bed Equipment — The operator loads the vehicle on the back of a truck. This is the best way of transporting the vehicle.

To accommodate flat-bed equipment, the vehicle is equipped with towing hooks (A) and tie down hooks (B).

The towing hook can be used with a winch to pull the vehicle onto the truck, and the tie down hooks slots can be used to secure the vehicle to truck.



Wheel Lift Equipment — The tow truck uses two pivoting arms that go under the tires (front or rear) and lifts them off the ground. The other two wheels remain on the ground. This is an acceptable way of towing the vehicle.

Sling-type Equipment — The tow truck uses metal cables with hooks on the ends. These hooks go around parts of the frame or suspension and the cables lift that end of the vehicle off the ground. The vehicle's suspension and body can be seriously damaged if this method of towing is attempted.

If the vehicle cannot be transported by flat-bed, it should be towed with the front wheels off the ground. If due to damage, the vehicle must be towed with the front wheels on the ground, do the following:

- Release the parking brake.
- Shift the transmission in Neutral.

It is best to tow the vehicle no farther than 50 miles (80 km), and keep the speed below 35 mph (55 km/h).

NOTICE

- Improper towing preparation will damage the transmission. Follow the above procedure exactly. If you cannot shift the transmission, the vehicle must be transported on a flat-bed.
- Trying to lift or tow the vehicle by the bumpers will cause serious damage. The bumpers are not designed to support the vehicle's weight.

General Information

Parts Marking

To deter vehicle theft, certain major components are marked with the vehicle identification number (VIN). Original parts have self-adhesive labels. Replacement body parts have generic self-adhesive labels. The original engine or transmission VIN plate is transferred to a replacement engine or transmission and attached with break-off bolts.

NOTE: Be careful not to damage the parts marking labels during body repair. Mask the labels before repairing the part.